

SPECIFICATIONS

1900 SQUARE FOOT PLAN

LOT #35 PINEVIEW AT RIVERSIDE

T.B.D. WHISPERING WAY COURT, MUNCIE, INDIANA

1. GENERAL INFORMATION

- A. Blueprints and permits by Contractor
- B. Layout by Ashton Surveyors
- C. Builders risk insurance by Contractor
- D. In the event of conflict between plans and specifications, specifications govern.
- E. 2-10 warranty by Contractor
- F. Financing by Contractor

2. FOUNDATION

- A. 8"x16" footers
- B. 8" block walls - 8" L-block top row
- C. 4" concrete slab with visqueen vapor barrier
- D. 2" Dow blueboard insulation vertically at perimeter of exterior walls

3. EXTERIOR WALLS

- A. 2"x4" stud walls - 16" O. C.
- B. 7/16" OSB on exterior walls with house wrap
- C. Vinyl siding at sides and back per plan (4" or 5" lap siding) – color?
- D. Stone at front per plan
- E. Vertical vinyl siding at front per plan and screen porch – color?
- F. 3-1/2" fiberglass batts - living area and garage (including bonus room)
- G. 1/2" drywall on house and garage side walls – smooth (including bonus room)
- H. 1/2" drywall on house and garage ceilings – textured (excluding bonus room)
- I. Miratec porch posts, painted – color?
- J. Miratec trim at front windows per plan, painted – color?

4. CONCRETE WORK

- A. 7'8"x17' porch at rear - 4" thick over 4" gravel
- B. 3' walkway from front porch to driveway
- C. 16' wide driveway to curb
- D. Front porch slab per plan
- E. 6'x17' patio at rear

9. EXTERIOR DOORS

- A. 3' insulated-steel (Craftsman style with glass) at front entry, painted – color?
- B. 3' full-lite steel at rear
- C. 3' insulated-steel Santa Fe at house to garage
- D. 16'x7' raised-panel steel insulated overhead door (series 199 with glass)

10. WINDOWS

- A. Single-hung vinyl thermopane – white or tan
- B. Grills (4 panes over 1) and screens all windows
- C. Transom above master bath vanity
- D. Transom above kitchen wall cabinets

11. MASTER BATH

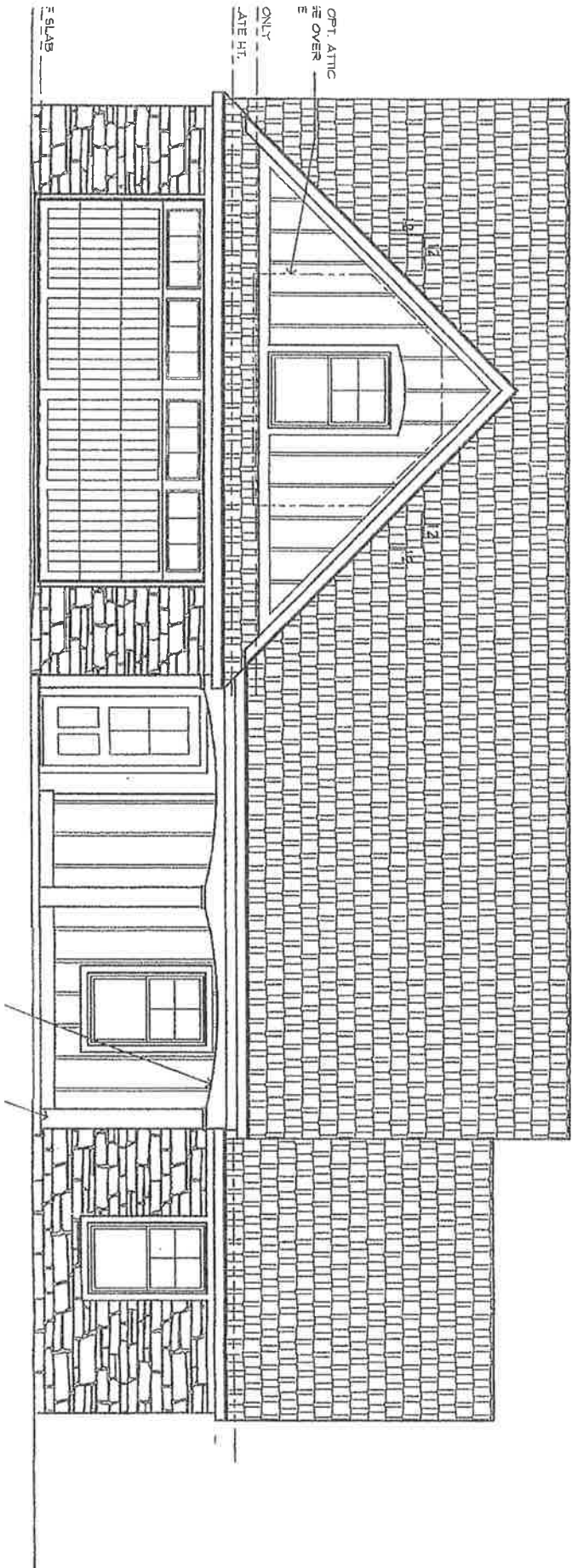
- A. 5' fiberglass shower - white or medium white
- B. Cultured-marble counter top with double bowl – color? (see Customer Option Values)
- C. Double-handle brushed nickel faucets at vanity (B2596) and single-handle brushed nickel at shower (BT14296) by Delta or equal
- D. Mansfield toilet - white or medium white
- E. Plate-glass mirror over vanity
- F. Vanity – same as kitchen (see Customer Option Values)
- G. Alexandria towel and paper holders or equal
- H. Stainless-steel-framed shower door
- I. Linen closet by Contractor (five shelves)

12. HALL BATH

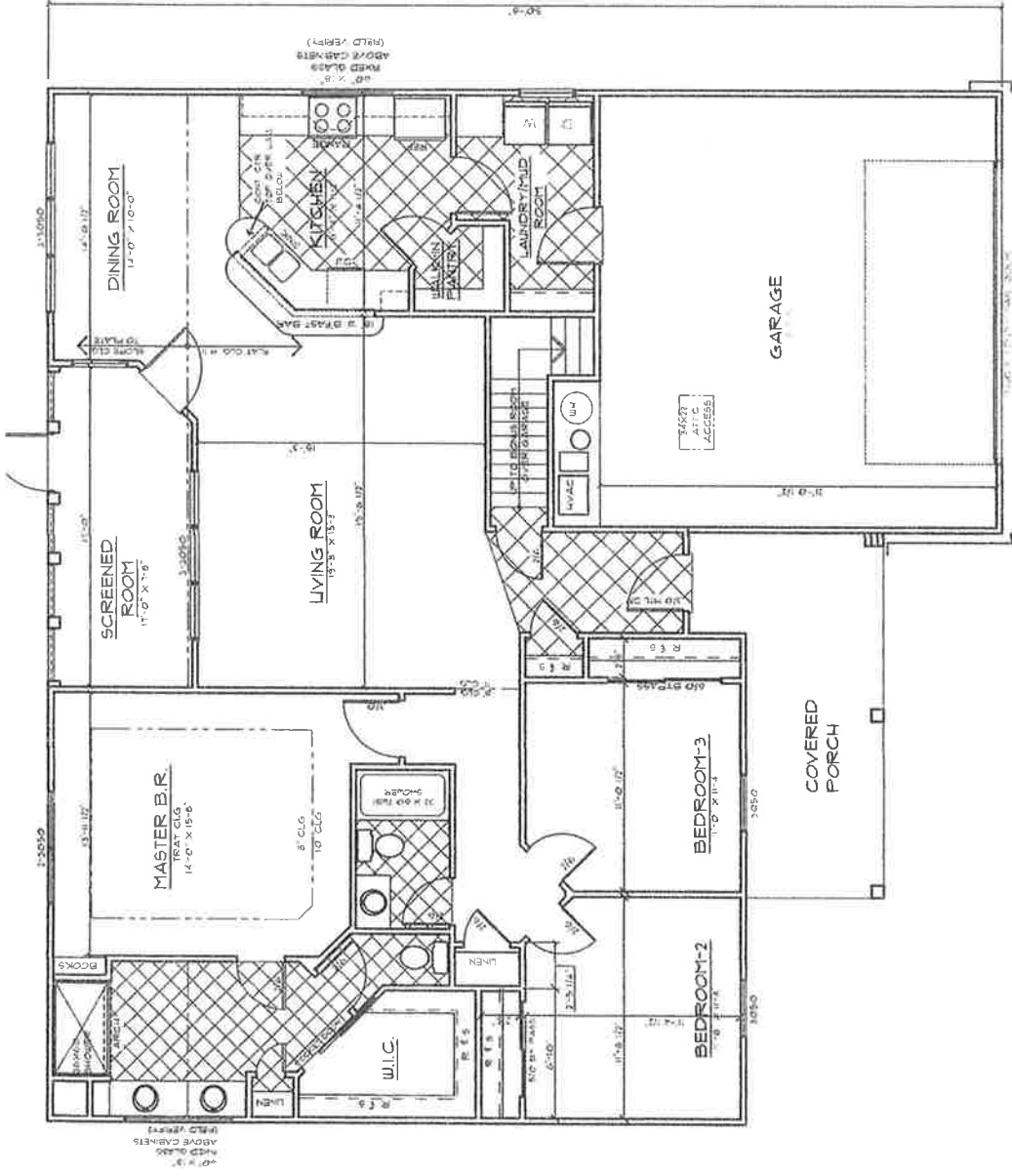
- A. 5' fiberglass tub/shower - white or medium white
- B. Cultured-marble counter top with single bowl – color? (see Customer Option Values)
- C. Double-handle brushed nickel faucet (B2596) at vanity and single-handle brushed nickel tub/shower (BT14496) by Delta or equal
- D. Mansfield toilet - white or medium white
- E. Plate-glass mirror over vanity
- F. Vanity – same as kitchen (see Customer Option Values)
- G. Alexandria towel and paper holders or equal
- H. Linen closet by Contractor (five shelves)

13. INTERIOR DOORS AND TRIM

- A. Two-panel beaded doors (Santa Fe) - primed
- B. 2 ¾" beaded trim casing (2088CA) around door openings only - primed
- C. 5 ¼" beaded baseboard (16168CB) - primed
- D. Painted walls - off-white flat latex (one color throughout house)
- E. Painted trim and interior doors - white satin finish latex
- F. Faultless Naples satin-nickel door handles, Lexington thumb latch at front entry, and single cylinder deadbolts
- G. Hampton rail - stained



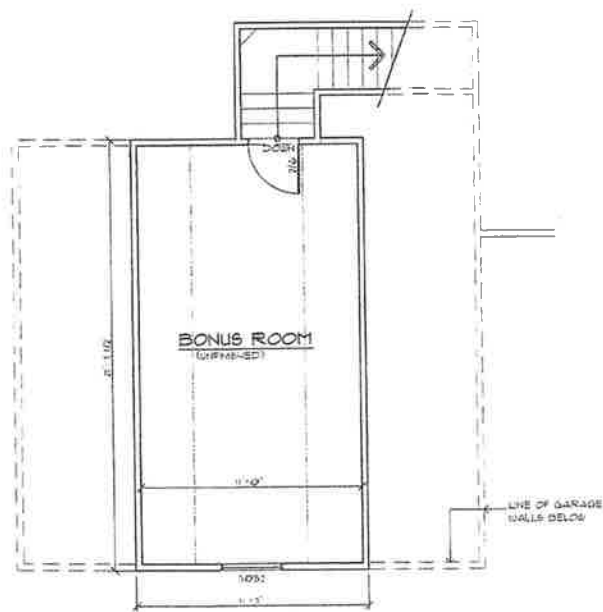
All rights reserved. No part of this plan may be reproduced or transmitted in any form or by any means, electronic or mechanical, including photo copy, recording, or any information storage and retrieval system without express permission of Trademark Construction, LLC.



FLOOR PLAN

1,638 SQ. FT.

All rights reserved. No part of this plan may be reproduced or transmitted in any form or by any means, electronic or mechanical, including photo copy, recording, or any information storage and retrieval system without express permission of Trademark Construction, LLC.



FLOOR PLAN
 (BONUS ROOM-261 SQ.FT.)

1/4" = 1'-0"

All rights reserved. No part of this plan may be reproduced or transmitted in any form or by any means, electronic or mechanical, including photo copy, recording, or any information storage and retrieval system without express permission of Trademark Construction, LLC.